



Imaged Document Cover Sheet

The document following this cover sheet is an imaged document supplied by LANDATA®, Victorian Land Registry Services.

Document Type	Plan
Document Identification	LP010576
Number of Pages (excluding this cover sheet)	6
Document Assembled	18/12/2019 11:06

Copyright and disclaimer notice:

© State of Victoria. This publication is copyright. No part may be reproduced by any process except in accordance with the provisions of the Copyright Act 1968 (Cth) and for the purposes of Section 32 of the Sale of Land Act 1962 or pursuant to a written agreement. The information is only valid at the time and in the form obtained from the LANDATA® System. None of the State of Victoria, LANDATA®, Victorian Land Registry Services Pty. Ltd. ABN 86 627 986 396 as trustee for the Victorian Land Registry Services Trust ABN 83 206 746 897 accept responsibility for any subsequent release, publication or reproduction of the information.

The document is invalid if this cover sheet is removed or altered.

PLAN OF SUBDIVISION

**PART OF CROWN ALLOTS 1,2,3 & 4 OF PORTION 3, SECTION 10
 AND PART OF CROWN ALLOTS 1 & 2 OF PORTION 4, SECTION 10**

PARISH OF CUT PAW PAW

COUNTY OF BOURKE

VOL. 4955 FOL. 910
 Measurements are in Feet & Inches
 Conversion Factor
 FEET X 0.3048 = METRES

APPROPRIATIONS

THE LAND COLOURED BLUE IS
 APPROPRIATED OR SET APART
 FOR DRAINAGE AND SEWERGAE
 PURPOSES

ENCUMBRANCES

AS TO THE LAND MARKED
 E-4 AND E-5 THE EASEMENT
 TO THE M.M.B.W. CREATED
 BY B902621A
 AS TO THE LAND MARKED E-6
 THE EASEMENT TO MMBW
 CREATED BY C240730
 AS TO ROADS R1, R2, R3, R4 & R5
 ANY EASEMENTS AFFECTING
 THE SAME

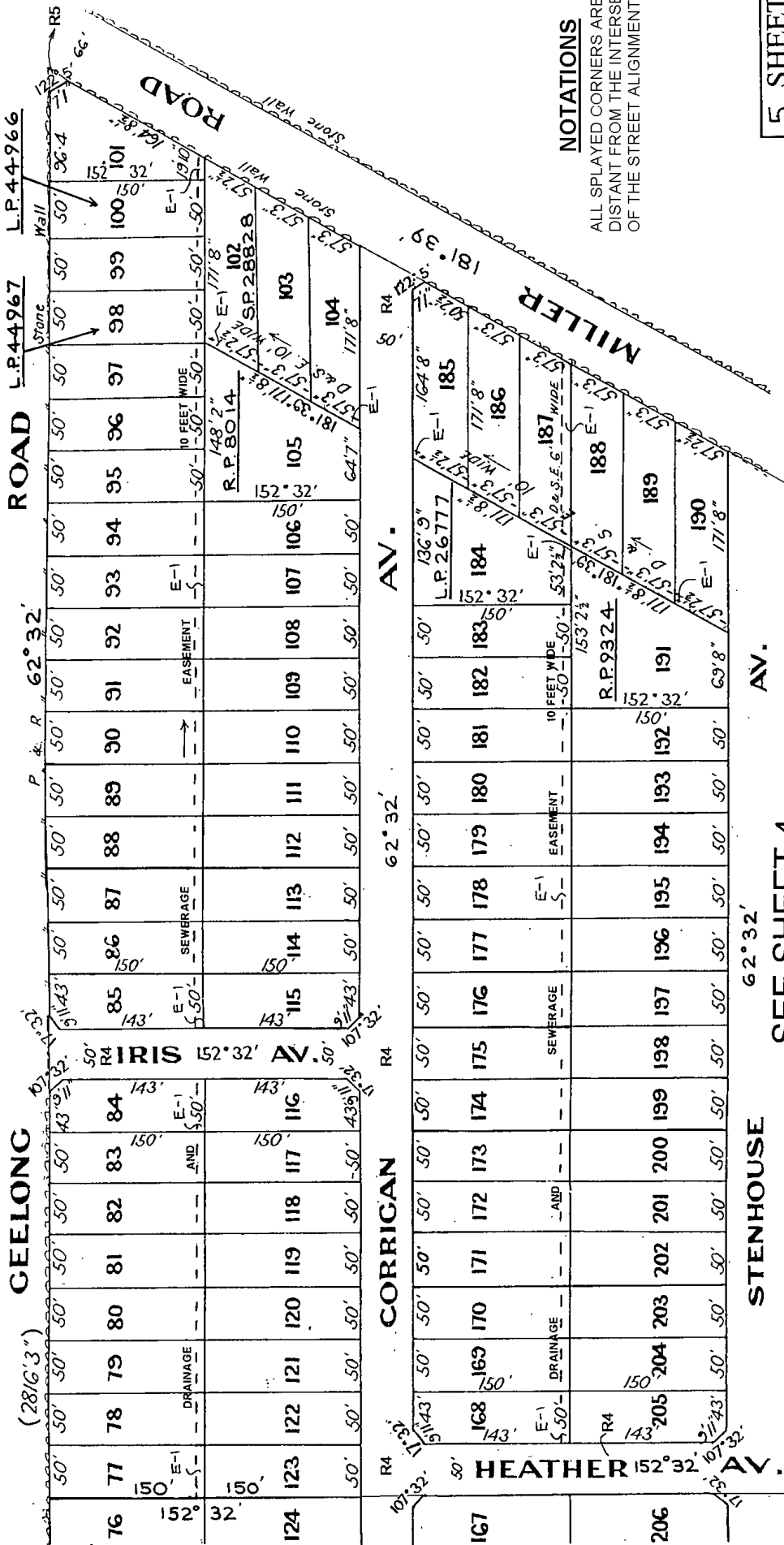
LP 10576

EDITION 6
 PLAN MAY BE LODGED
 13/2/25

COLOUR CODE

E-1 & E-5 = BLUE
 R1, R2, R3, R4, R5 & R6 = BROWN
 E-6 & E-3 = PURPLE

ROADS COLOURED BROWN



NOTATIONS

ALL PLAYED CORNERS ARE 7 FEET
 DISTANT FROM THE INTERSECTION
 OF THE STREET ALIGNMENT

**5 SHEETS
 SHEET 1**

SEE SHEET 2

WARNING: THE IMAGE OF THIS DOCUMENT OF THE REGISTER HAS BEEN DIGITALLY AMENDED.
 NO FURTHER AMENDMENTS ARE TO BE MADE TO THE ORIGINAL DOCUMENT OF THE REGISTER.

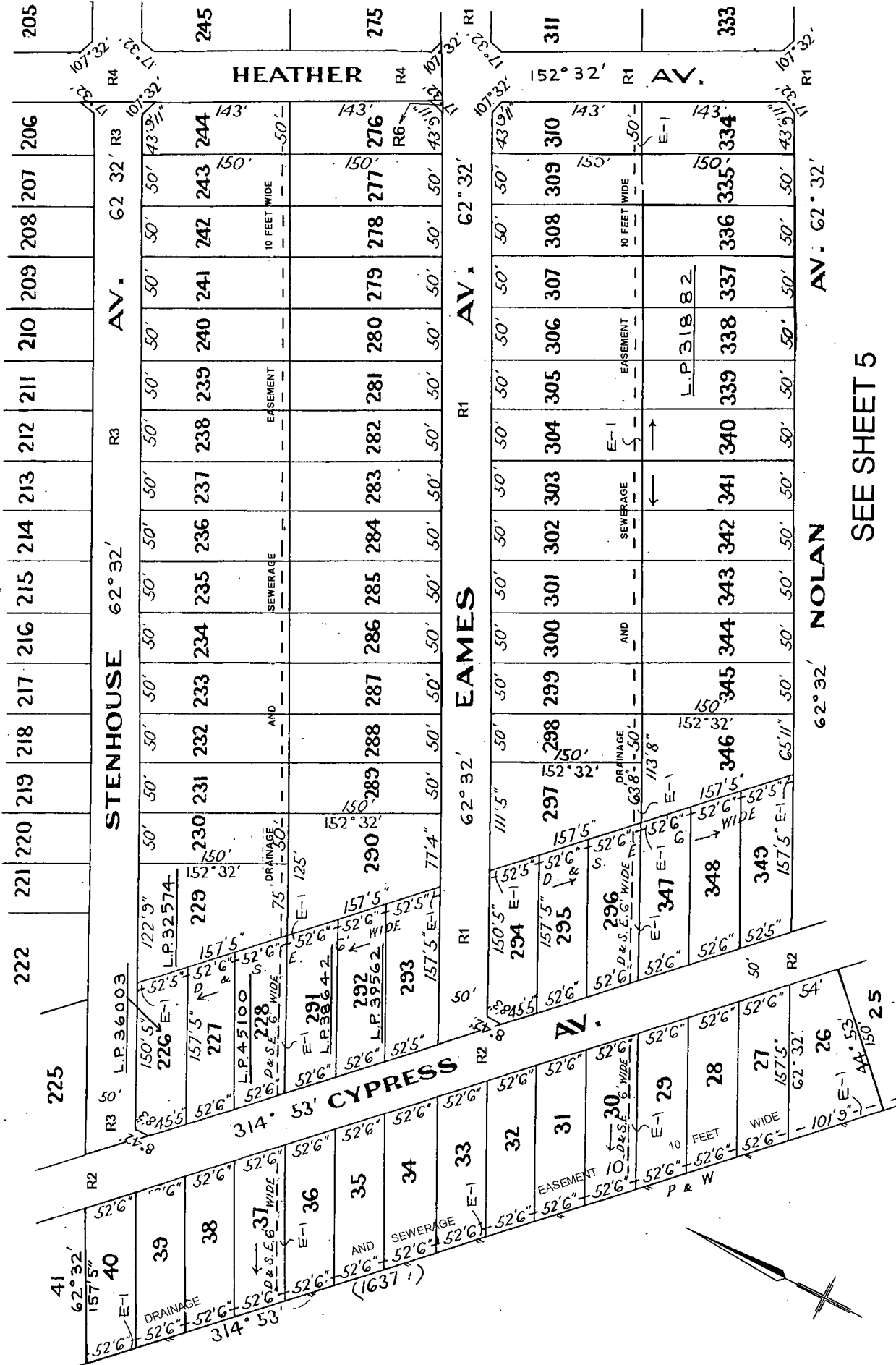
5 SHEETS
SHEET 3

LP 10576

WARNING: THE IMAGE OF THIS DOCUMENT OF THE REGISTER HAS BEEN DIGITALLY AMENDED.
NO FURTHER AMENDMENTS ARE TO BE MADE TO THE ORIGINAL DOCUMENT OF THE REGISTER.

SEE SHEET 2

SEE SHEET 4

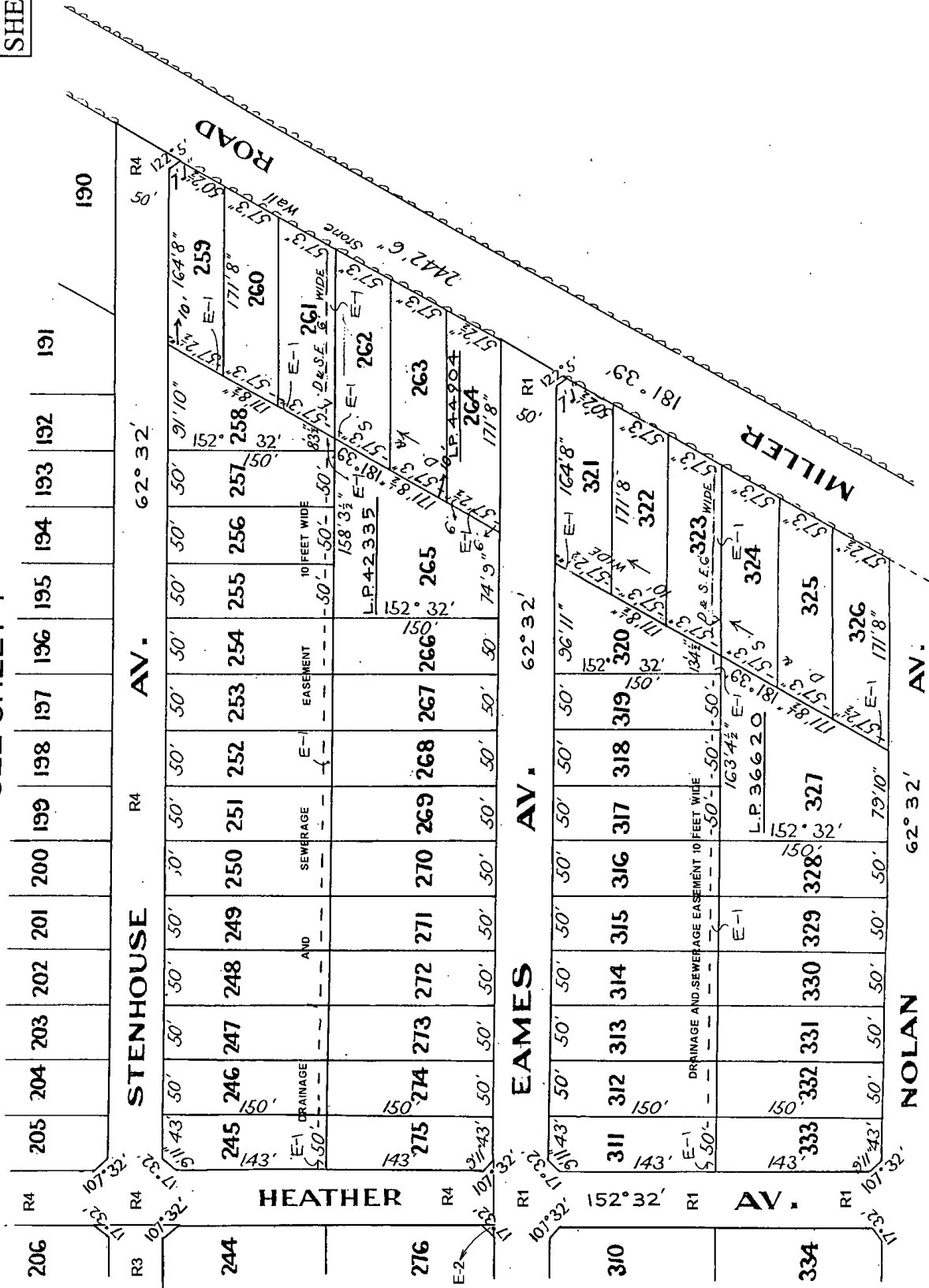


SEE SHEET 5

LP 10576

5 SHEETS
 SHEET 4.

SEE SHEET 1



SEE SHEET 3

SEE SHEET 5

